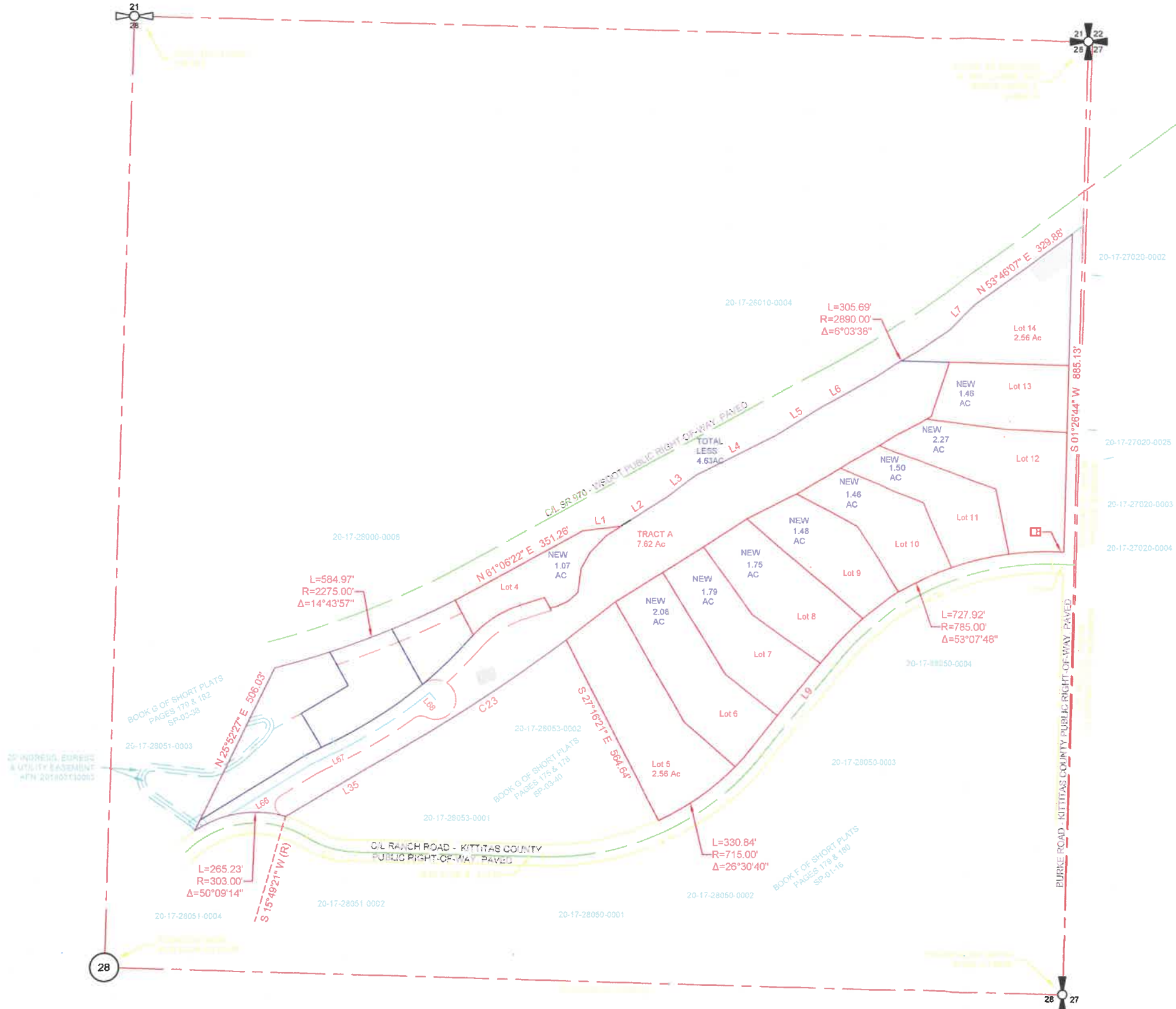


ATTACHMENT A.
- NEW Configuration



LINE #	DIRECTION	DISTANCE
L1	N 82°54'27" E	107.70'
L2	N 57°17'31" E	150.33'
L3	N 52°34'31" E	101.12'
L4	N 63°23'48" E	250.20'
L5	N 57°17'31" E	150.33'
L6	N 61°06'22" E	103.83'
L7	N 45°47'50" E	102.99'
L8	N 88°33'16" W	30.00'
L9	S 38°18'55" W	315.81'
L10	N 86°56'45" W	178.05'
L11	N 11°21'03" W	184.58'
L12	N 23°35'48" W	197.01'
L13	N 33°17'43" W	217.33'
L14	N 54°04'20" W	230.38'
L15	N 51°40'35" W	184.04'
L16	N 48°19'37" W	187.11'
L17	N 28°42'17" W	174.99'
L18	N 88°33'16" W	60.00'

LINE #	DIRECTION	DISTANCE
L19	S 38°18'55" W	315.81'
L20	N 58°11'40" E	342.94'
L21	N 63°39'26" E	89.27'
L22	N 63°39'26" E	52.24'
L23	N 63°39'26" E	37.03'
L24	N 25°52'27" E	472.63'
L25	N 25°52'27" E	33.39'
L26	S 30°48'44" E	110.41'
L27	S 59°11'16" W	151.04'
L28	S 28°50'47" E	106.95'
L29	N 42°24'11" E	42.81'
L30	S 72°05'27" W	70.45'
L31	S 27°35'27" E	109.13'
L32	S 27°16'21" E	132.75'
L33	S 10°24'47" W	231.41'
L34	N 57°17'31" E	31.36'
L35	S 59°11'16" W	384.41'
L36	N 15°46'31" W	305.45'

LINE #	DIRECTION	DISTANCE
L37	N 45°47'50" E	33.95'
L38	N 53°46'07" E	96.05'
L39	S 78°36'36" E	53.46'
L40	S 86°47'05" E	95.66'
L41	N 88°42'48" E	10.16'
L42	N 1°26'44" E	184.58'
L43	N 10°24'47" E	54.80'
L44	S 57°17'31" W	67.14'
L45	S 31°33'15" W	27.49'
L46	S 25°32'31" W	32.94'
L47	S 8°12'13" W	43.46'
L48	S 13°59'49" W	42.06'
L49	S 36°02'33" W	28.36'
L50	S 60°48'27" W	22.43'
L51	S 62°45'27" W	24.41'
L52	S 73°06'54" W	19.22'
L53	S 74°00'26" W	13.53'
L54	S 67°59'19" W	4.60'

LINE #	DIRECTION	DISTANCE
L55	S 72°05'27" W	77.05'
L56	S 57°06'35" W	15.06'
L57	S 45°09'50" W	44.22'
L58	S 27°16'21" E	34.73'
L59	N 42°24'11" E	42.81'
L60	N 63°39'26" E	86.41'
L61	N 58°11'40" E	114.67'
L62	S 61°23'02" W	92.15'
L63	N 27°35'27" W	40.00'
L64	N 28°50'47" W	40.69'
L65	N 25°52'27" E	145.01'
L66	N 58°11'40" E	270.44'
L67	N 63°39'26" E	87.84'
L68	N 40°16'02" W	25.00'

CURVE #	RADIUS	LENGTH	DELTA
C1	785.00'	123.20'	8°59'31"
C2	785.00'	163.63'	11°56'36"
C3	785.00'	158.58'	11°34'28"
C4	785.00'	127.94'	9°20'18"
C5	785.00'	154.57'	11°16'55"
C6	715.00'	72.22'	5°47'14"
C7	715.00'	258.61'	20°43'26"
C8	2275.00'	159.93'	4°01'40"
C9	2275.00'	191.07'	4°48'43"
C10	750.00'	695.47'	53°07'48"
C11	750.00'	693.68'	52°59'36"
C12	273.00'	144.10'	30°14'32"
C13	273.00'	366.07'	76°49'41"
C14	2890.00'	157.86'	3°07'47"
C15	2890.00'	147.83'	2°55'51"
C16	2275.00'	182.28'	4°35'26"
C17	300.00'	155.44'	29°4'16"
C18	1200.00'	445.14'	21°15'14"

CURVE #	RADIUS	LENGTH	DELTA
C19	1200.00'	291.63'	13°55'27"
C20	1200.00'	153.51'	7°19'47"
C21	4970.00'	173.53'	2°00'02"
C22	2275.00'	51.69'	1°18'07"
C23	4970.00'	532.65'	6°08'26"
C24	260.00'	134.72'	29°41'16"
C25	1240.00'	106.03'	4°53'57"
C26	30.00'	33.49'	63°57'07"
C27	1260.00'	229.49'	10°26'09"
C28	30.00'	70.07'	133°49'06"
C29	55.00'	237.53'	247°26'26"
C30	55.00'	167.49'	174°28'44"
C31	2315.00'	372.38'	9°12'59"
C32	130.00'	26.87'	11°50'33"
C33	285.00'	59.42'	11°56'45"
C34	105.00'	42.75'	23°19'38"
C35	303.00'	7.65'	1°26'46"
C36	1230.00'	298.92'	13°55'27"

RECEIVED
OCT 20 2020
Kittitas County CDS